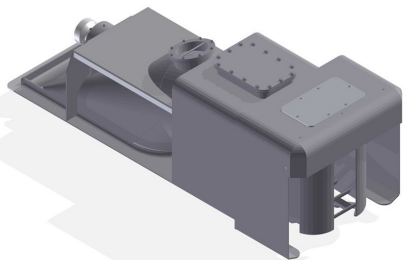


ADVANCED MARINE PROPULSION

TRAKTOR® Jet 610HT



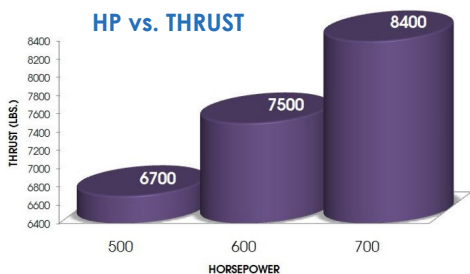
19.5m x 5.2m - 21.4 knots @ 20,865 Kg

TJ 610HT SPECIFICATIONS

Horsepower Range	400-700 (298-522 kW)
RPM Range @ Jet	850-1050
Impeller Diameter	24" (610mm)
Thrust Range (Bollard pull)	6000-8450 lbs. (26.69-37.59 kN)
Speed Range	0-30 knots
Unit Weight (Dry)	1300 lbs. (590 kg)

For over 25 years **NAMJet's** advanced marine propulsion systems have set the standard for **Thrust, Durability, and Speed**. Designed for a wide variety of commercial, military, and workboat applications, our **TRAKTOR® Jet** line of high-thrust marine jets is tough enough to withstand the most brutal conditions imaginable. **TRAKTOR® Jets** are rated for speeds up to 35 knots, and may be fully customized to meet the standards of the world's most demanding operators.

TRAKTOR® Jet's unique design simplifies installation by welding directly into the hull to become part of the vessel's structure, eliminating the need for transition ducts or transom plates. **TRAKTOR® Jet's** unique design offers the flexibility of multiple transom configurations aboard steel, composite, and aluminum-hulled vessels.



MATERIAL SPECIFICATIONS

Intake, Hood, Steering	Aluminum 5086
Main Shaft & Coupler	Stainless Steel
Impeller	316 Stainless
Stator Bearing (Water Lubricated)	Thordon Composite
Hardware & Fasteners	Stainless Steel
Wear Ring / Stator	Aluminum 5086

DIMENSIONS

A	110.33" (2802mm)
B	87.33" (2218mm)
C	60.64" (1540mm)
D	32.00" (813mm)
E	36.25" (921mm)
F	32.5" (826mm)
G	40.50" (1029mm)
H	15.50" (394mm)
I	48.21" (1225mm)

